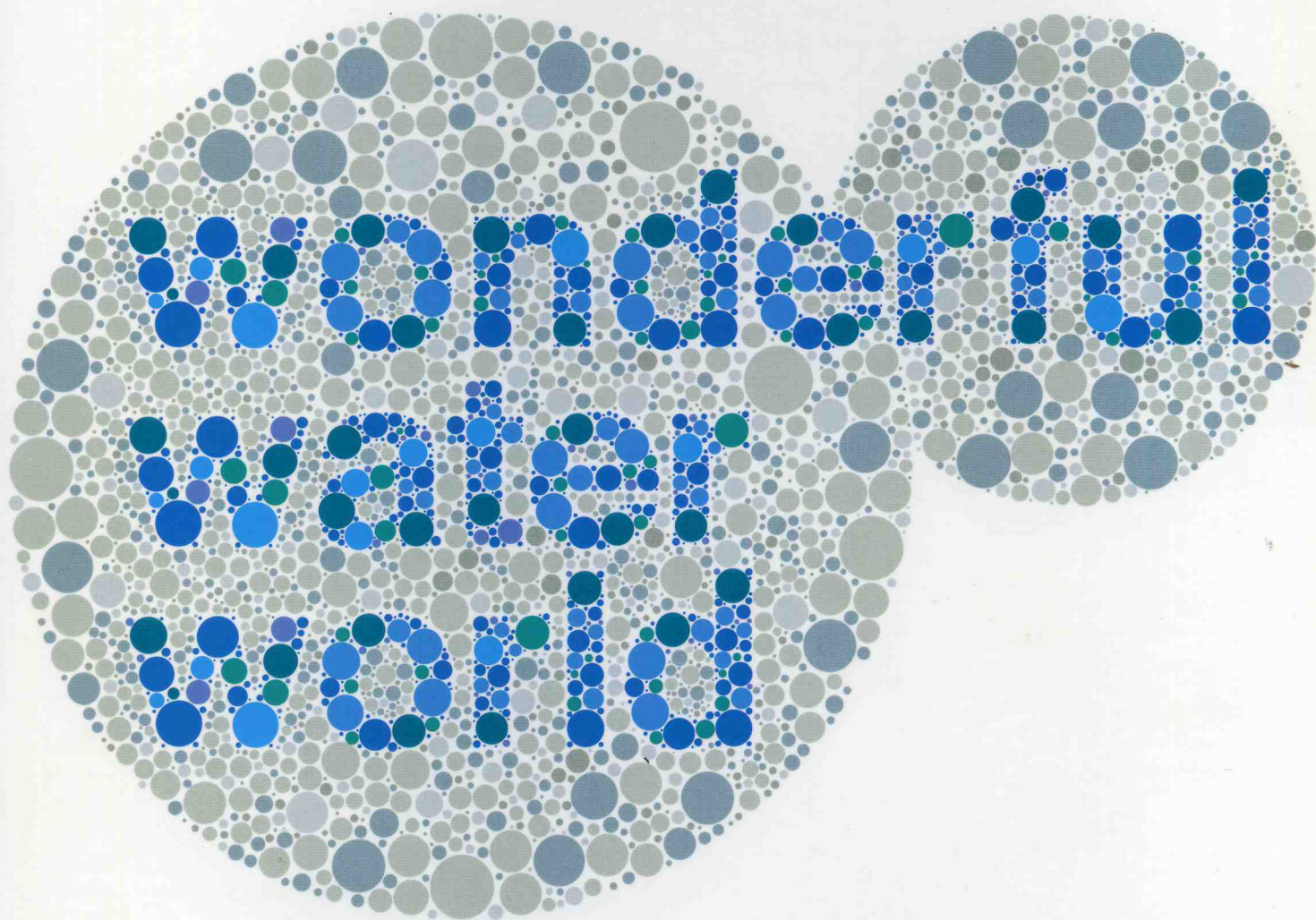


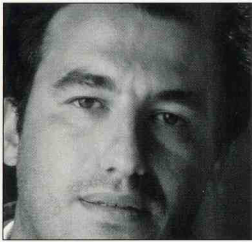
# WWW Quaranta Progetti Foodesign Guzzini e Sanpellegrino. I nuovi valori dell'acqua

A cura di Aldo Colonetti





## Deepdesign MATTEO BAZZICALUPO + RAFFAELLA MANGIAROTTI



Matteo Bazzicalupo e Raffaella Mangiarotti, architetti e designer, collaborano da anni alla definizione di scenari e prodotti per Aldo Coppola, Barilla, Castelli Haworth, Coca Cola, Daimler Chrysler, Giorgetti, Kraft, Imetec, Mandarina Duck, Matsushita, Whirlpool. Ricercatori e docenti, hanno tenuto lezioni presso vari istituti e università e hanno conseguito riconoscimenti come l'ID Award 2003 e la selezione dell'*International Design Yearbook 2005*.

> Matteo Bazzicalupo and Raffaella Mangiarotti, architects and designers, have worked together for years, defining scenarios and products for Aldo Coppola, Barilla, Castelli Haworth, Coca-Cola, DaimlerChrysler, Giorgetti, Kraft, Imetec, Mandarina Duck, Matsushita and Whirlpool. They are researchers and teachers, and have taught at a variety

of institutes and universities. They have received recognitions such as the 2003 ID Award, and were selected for the *International Design Yearbook 2005*.

### WATER & ICE

Set da degustazione per conferire lusso e prestigio all'acqua monouso: un calice pieno d'acqua in polistirolo cristallo, sigillato con peelable in foglia di alluminio e un ghiacciolo di acqua tracciabile e certificata in multipack congelabile e un vassoio realizzato in Corian DuPont.

> A set for drinking including a crystal polystyrene goblet of water, sealed with peel-back aluminium foil to give luxury prestige to this disposable water container; a serving of frozen water that can be traced and certified in a freezable multi-pack and a tray made of DuPont Corian.



